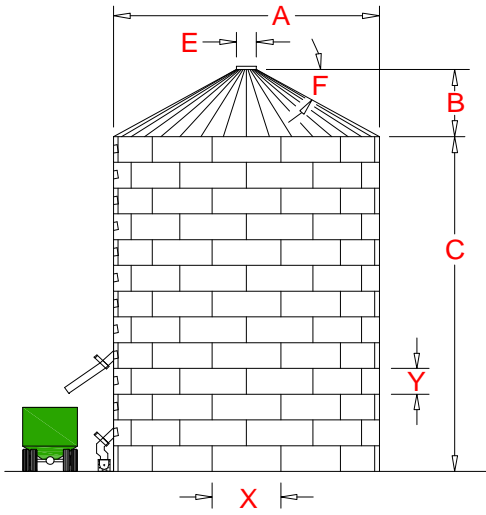


BUSHEL Capacity of Flat Bottom Tank using 112.5" x 32" Sheets



DIM.		
E	30	Inch Diameter of Top Opening
F	30	Degree of Roof
	6.00%	Per Cent Compaction
	48	PCF Density of stored Material
X	112.5	Inches Horizontal arc coverage/sheet
Y	32	Inches Vertical coverage/Tier
Z	28	Degree Repose Angle of peaked Material
	25,000	Sq.Ft. Coverage/Sheet

Tiers High												Sheets per Tier	Actual Diameter FEET	Height of Peak FEET	Roof Surface Area in SQ.FT.
	3	6	9	12	15	18	21	24	27	30	33				
C (ft)	8	16	24	32	40	48	56	64	72	80	88				
NOM. DIA.	Capacity of Tank in BUSHELS, including material peaked at Repose Angle above sidewall												A	B	
15	1,388	2,580	3,771	4,963	6,154	7,346	8,537	9,728	10,920	12,111	13,303	5	14.921	3.586	196
18	2,056	3,772	5,487	7,203	8,919	10,634	12,350	14,066	15,781	17,497	19,213	6	17.905	4.447	285
21	2,876	5,211	7,546	9,881	12,217	14,552	16,887	19,222	21,557	23,893	26,228	7	20.889	5.308	390
24	3,857	6,907	9,957	13,007	16,057	19,107	22,157	25,207	28,257	31,308	34,358	8	23.873	6.170	511
27	5,009	8,869	12,729	16,590	20,450	24,310	28,170	32,031	35,891	39,751	43,612	9	26.857	7.031	648
30	6,341	11,107	15,873	20,638	25,404	30,170	34,936	39,702	44,467	49,233	53,999	10	29.842	7.893	802
33	7,863	13,630	19,397	25,163	30,930	36,696	42,463	48,230	53,996	59,763	65,529	11	32.826	8.754	972
36	9,585	16,448	23,310	30,173	37,036	43,899	50,761	57,624	64,487	71,349	78,212	12	35.810	9.616	1,157
42	13,664	23,005	32,346	41,687	51,027	60,368	69,709	79,050	88,391	97,732	107,073	14	41.778	11.339	1,577
45	16,040	26,763	37,486	48,209	58,932	69,655	80,378	91,101	101,824	112,547	123,270	15	44.762	12.200	1,811
48	18,653	30,854	43,054	55,254	67,455	79,655	91,856	104,056	116,256	128,457	140,657	16	47.746	13.062	2,062
54	24,629	40,070	55,511	70,952	86,393	101,834	117,275	132,717	148,158	163,599	179,040	18	53.715	14.784	2,611
60	31,666	50,729	69,792	88,856	107,919	126,982	146,045	165,108	184,171	203,234	222,297	20	59.683	16.507	3,225
66	39,841	62,907	85,974	109,040	132,107	155,173	178,239	201,306	224,372	247,438	270,505	22	65.651	18.230	3,903
72	49,229	76,680	104,131	131,582	159,033	186,483	213,934	241,385	268,836	296,287	323,738	24	71.620	19.953	4,646
75	54,402	84,188	113,974	143,760	173,546	203,332	233,118	262,904	292,690	322,476	352,263	25	74.604	20.815	5,042
78	59,906	92,122	124,339	156,556	188,772	220,989	253,206	285,422	317,639	349,856	382,072	26	77.588	21.676	5,454
90	85,428	128,320	171,211	214,103	256,995	299,887	342,779	385,671	428,563	471,455	514,347	30	89.525	25.122	7,263
104	125,926	184,306	242,687	301,068	359,449	417,829	476,210	534,591	592,972	651,352	709,733	35	104.445	29.429	9,888
116	165,938	238,425	310,913	383,400	455,888	528,375	600,863	673,350	745,838	818,325	890,813	39	116.382	32.875	12,278