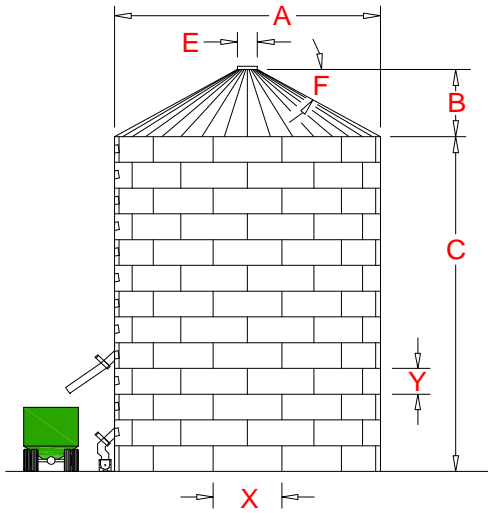


# BUSHEL Capacity of Flat Bottom Tank using 116.5" x 42" Sheets



DIM.		
<b>E</b>	<b>30</b>	Inch Diameter of Top Opening
<b>F</b>	<b>30</b>	Degree of Roof
	<b>6.00%</b>	Per Cent Compaction
	<b>48</b>	PCF Density of stored Material
<b>X</b>	<b>116.5</b>	Inches Horizontal arc coverage/sheet
<b>Y</b>	<b>42</b>	Inches Vertical coverage/Tier
<b>Z</b>	<b>28</b>	Degree Repose Angle of peaked Material
	<b>33.979</b>	Sq.Ft. Coverage/Sheet

Tiers High												Sheets per Tier	Actual Diameter FEET	Height of Peak FEET	Roof Surface Area in SQ.FT.
	3	6	9	12	15	18	21	24	27	30	33				
<b>C (ft)</b>	<b>10.5</b>	<b>21</b>	<b>31.5</b>	<b>42</b>	<b>52.5</b>	<b>63</b>	<b>73.5</b>	<b>84</b>	<b>94.5</b>	<b>105</b>	<b>115.5</b>				
<b>NOM. DIA.</b>	Capacity of Tank in BUSHELs, including material peaked at Repose Angle above sidewall												<b>A</b>	<b>B</b>	
<b>15</b>	1,896	3,573	5,250	6,926	8,603	10,280	11,957	13,634	15,311	16,988	18,665	<b>5</b>	<b>15.451</b>	<b>3.739</b>	211
<b>19</b>	2,793	5,207	7,622	10,037	12,452	14,867	17,282	19,696	22,111	24,526	26,941	<b>6</b>	<b>18.542</b>	<b>4.631</b>	306
<b>22</b>	3,887	7,174	10,461	13,747	17,034	20,321	23,608	26,895	30,181	33,468	36,755	<b>7</b>	<b>21.632</b>	<b>5.523</b>	419
<b>25</b>	5,189	9,482	13,775	18,068	22,361	26,654	30,947	35,240	39,533	43,826	48,119	<b>8</b>	<b>24.722</b>	<b>6.415</b>	549
<b>28</b>	6,709	12,142	17,575	23,009	28,442	33,875	39,309	44,742	50,175	55,609	61,042	<b>9</b>	<b>27.812</b>	<b>7.307</b>	696
<b>31</b>	8,457	15,165	21,873	28,581	35,288	41,996	48,704	55,412	62,120	68,827	75,535	<b>10</b>	<b>30.903</b>	<b>8.199</b>	860
<b>34</b>	10,445	18,561	26,678	34,794	42,911	51,027	59,144	67,260	75,376	83,493	91,609	<b>11</b>	<b>33.993</b>	<b>9.091</b>	1,042
<b>37</b>	12,682	22,342	32,001	41,660	51,319	60,978	70,638	80,297	89,956	99,615	109,275	<b>12</b>	<b>37.083</b>	<b>9.983</b>	1,241
<b>43</b>	17,948	31,095	44,242	57,390	70,537	83,684	96,832	109,979	123,126	136,273	149,421	<b>14</b>	<b>43.264</b>	<b>11.767</b>	1,692
<b>46</b>	20,997	36,090	51,182	66,275	81,367	96,460	111,552	126,645	141,737	156,830	171,922	<b>15</b>	<b>46.354</b>	<b>12.660</b>	1,943
<b>49</b>	24,338	41,510	58,682	75,854	93,026	110,198	127,370	144,541	161,713	178,885	196,057	<b>16</b>	<b>49.444</b>	<b>13.552</b>	2,211
<b>56</b>	31,936	53,669	75,403	97,136	118,869	140,602	162,336	184,069	205,802	227,535	249,269	<b>18</b>	<b>55.625</b>	<b>15.336</b>	2,800
<b>62</b>	40,827	67,658	94,489	121,321	148,152	174,983	201,814	228,645	255,476	282,308	309,139	<b>20</b>	<b>61.805</b>	<b>17.120</b>	3,459
<b>68</b>	51,094	83,560	116,026	148,491	180,957	213,423	245,889	278,354	310,820	343,286	375,751	<b>22</b>	<b>67.986</b>	<b>18.904</b>	4,186
<b>74</b>	62,822	101,459	140,095	178,732	217,369	256,006	294,643	333,280	371,917	410,554	449,191	<b>24</b>	<b>74.166</b>	<b>20.688</b>	4,983
<b>77</b>	69,259	111,183	153,107	195,030	236,954	278,878	320,802	362,725	404,649	446,573	488,496	<b>25</b>	<b>77.256</b>	<b>21.580</b>	5,407
<b>80</b>	76,094	121,438	166,783	212,128	257,472	302,817	348,162	393,506	438,851	484,196	529,540	<b>26</b>	<b>80.347</b>	<b>22.472</b>	5,849
<b>93</b>	107,606	167,976	228,346	288,717	349,087	409,457	469,827	530,197	590,567	650,937	711,308	<b>30</b>	<b>92.708</b>	<b>26.041</b>	7,789
<b>108</b>	157,179	239,350	321,520	403,691	485,861	568,032	650,202	732,373	814,543	896,714	978,884	<b>35</b>	<b>108.159</b>	<b>30.501</b>	10,604
<b>121</b>	205,803	307,828	409,854	511,879	613,905	715,931	817,956	919,982	1,022,007	#####	#####	<b>39</b>	<b>120.520</b>	<b>34.069</b>	13,167