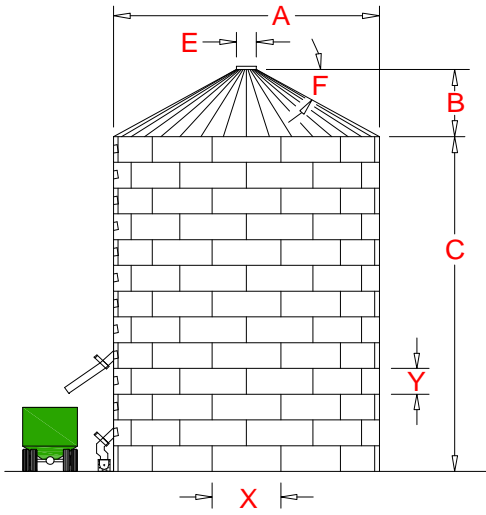


BUSHEL Capacity of Flat Bottom Tank using 112.5" x 44" Sheets



DIM.		
E	30	Inch Diameter of Top Opening
F	30	Degree of Roof
	6.00%	Per Cent Compaction
	48	PCF Density of stored Material
X	112.5	Inches Horizontal arc coverage/sheet
Y	44	Inches Vertical coverage/Tier
Z	28	Degree Repose Angle of peaked Material
	34.375	Sq.Ft. Coverage/Sheet

Tiers High												Sheets per Tier	Actual Diameter FEET	Height of Peak FEET	Roof Surface Area in SQ.FT.
	3	6	9	12	15	18	21	24	27	30	33				
C (ft)	11	22	33	44	55	66	77	88	99	110	121				
NOM. DIA.	Capacity of Tank in BUSHELS, including material peaked at Repose Angle above sidewall												A	B	
15	1,835	3,473	5,112	6,750	8,388	10,026	11,665	13,303	14,941	16,579	18,218	5	14.921	3.586	196
18	2,699	5,058	7,417	9,777	12,136	14,495	16,854	19,213	21,572	23,931	26,290	6	17.905	4.447	285
21	3,751	6,962	10,173	13,384	16,595	19,806	23,017	26,228	29,439	32,650	35,861	7	20.889	5.308	390
24	5,000	9,194	13,388	17,582	21,776	25,970	30,164	34,358	38,552	42,745	46,939	8	23.873	6.170	511
27	6,456	11,764	17,072	22,380	27,688	32,996	38,304	43,612	48,919	54,227	59,535	9	26.857	7.031	648
30	8,128	14,681	21,234	27,787	34,340	40,893	47,446	53,999	60,552	67,105	73,658	10	29.842	7.893	802
33	10,026	17,955	25,884	33,813	41,742	49,671	57,600	65,529	73,458	81,387	89,317	11	32.826	8.754	972
36	12,159	21,595	31,031	40,467	49,903	59,340	68,776	78,212	87,648	97,085	106,521	12	35.810	9.616	1,157
42	17,167	30,010	42,854	55,698	68,542	81,385	94,229	107,073	119,917	132,761	145,604	14	41.778	11.339	1,577
45	20,061	34,805	49,549	64,293	79,038	93,782	108,526	123,270	138,014	152,758	167,502	15	44.762	12.200	1,811
48	23,228	40,004	56,779	73,555	90,330	107,106	123,882	140,657	157,433	174,208	190,984	16	47.746	13.062	2,062
54	30,419	51,651	72,882	94,114	115,345	136,577	157,808	179,040	200,271	221,503	242,735	18	53.715	14.784	2,611
60	38,815	65,027	91,238	117,450	143,662	169,874	196,086	222,297	248,509	274,721	300,933	20	59.683	16.507	3,225
66	48,491	80,207	111,923	143,640	175,356	207,072	238,788	270,505	302,221	333,937	365,653	22	65.651	18.230	3,903
72	59,523	97,268	135,013	172,758	210,503	248,248	285,993	323,738	361,483	399,228	436,973	24	71.620	19.953	4,646
75	65,571	106,527	147,483	188,439	229,395	270,351	311,307	352,263	393,218	434,174	475,130	25	74.604	20.815	5,042
78	71,987	116,285	160,583	204,881	249,179	293,476	337,774	382,072	426,370	470,668	514,966	26	77.588	21.676	5,454
90	101,512	160,488	219,465	278,441	337,418	396,394	455,371	514,347	573,324	632,300	691,277	30	89.525	25.122	7,263
104	147,818	228,092	308,365	388,639	468,913	549,186	629,460	709,733	790,007	870,280	950,554	35	104.445	29.429	9,888
116	193,121	292,791	392,461	492,132	591,802	691,472	791,142	890,813	990,483	#####	#####	39	116.382	32.875	12,278