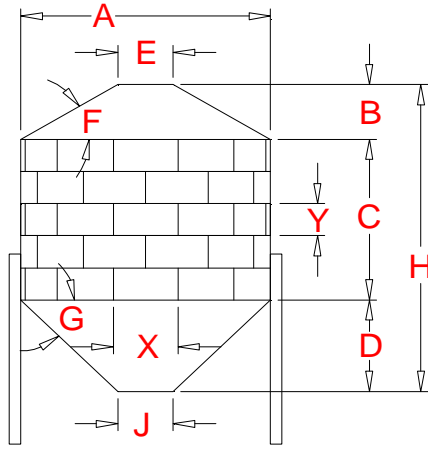


Cubic Foot Capacity of 40° Hopper Tank using 112.5" x 32" Sheets



- E** 30 Inch Diameter-Top Opening
- F** 30 degree of Roof
- G** 40 degree of Hopper
- J** 16 Inch Dia.-Discharge Opening
- X** 112.5 Inch Arc Length
- Y** 32 Inch Tier (Ring) Height

Tiers High	1	2	3	4	5	6	7	8	9	10	Sheets per Tier	Actual Diameter Feet	Roof Height Feet	Hopper Height Feet
C (ft)	2.67	5.33	8.00	10.67	13.33	16.00	18.67	21.33	24.00	26.67		A	B	D
Nom.Dia.	CAPACITY IN CUBIC FEET													
6	113	187	262	336	411	486	560	635	709	784	2	5.968	1.001	1.945
9	299	467	635	803	971	1,139	1,307	1,474	1,642	1,810	3	8.952	1.863	3.197
12	612	911	1,209	1,508	1,806	2,104	2,403	2,701	3,000	3,298	4	11.937	2.724	4.449
15	1,081	1,547	2,013	2,480	2,946	3,412	3,878	4,345	4,811	5,277	5	14.921	3.586	5.701
18	1,734	2,406	3,077	3,749	4,420	5,091	5,763	6,434	7,106	7,777	6	17.905	4.447	6.953
21	2,603	3,516	4,430	5,344	6,258	7,172	8,086	9,000	9,914	10,828	7	20.889	5.308	8.205
24	3,715	4,909	6,102	7,296	8,490	9,683	10,877	12,071	13,264	14,458	8	23.873	6.170	9.457
27	5,101	6,612	8,123	9,633	11,144	12,655	14,166	15,676	17,187	18,698	9	26.857	7.031	10.709
30	6,791	8,656	10,521	12,386	14,251	16,116	17,981	19,847	21,712	23,577	10	29.842	7.893	11.961
33	8,814	11,070	13,327	15,584	17,841	20,097	22,354	24,611	26,868	29,124	11	32.826	8.754	13.213
36	11,199	13,884	16,570	19,256	21,942	24,627	27,313	29,999	32,685	35,370	12	35.810	9.616	14.465
39	13,976	17,128	20,280	23,432	26,584	29,736	32,888	36,040	39,192	42,344	13	38.794	10.477	15.717

Dimension "H" in Feet

Tiers High	1	2	3	4	5	6	7	8	9	10	Sheets per Tier
Nom.Dia.											
6	5.6	8.3	10.9	13.6	16.3	18.9	21.6	24.3	26.9	29.6	2
9	7.7	10.4	13.1	15.7	18.4	21.1	23.7	26.4	29.1	31.7	3
12	9.8	12.5	15.2	17.8	20.5	23.2	25.8	28.5	31.2	33.8	4
15	12.0	14.6	17.3	20.0	22.6	25.3	28.0	30.6	33.3	36.0	5
18	14.1	16.7	19.4	22.1	24.7	27.4	30.1	32.7	35.4	38.1	6
21	16.2	18.8	21.5	24.2	26.8	29.5	32.2	34.8	37.5	40.2	7
24	18.3	21.0	23.6	26.3	29.0	31.6	34.3	37.0	39.6	42.3	8
27	20.4	23.1	25.7	28.4	31.1	33.7	36.4	39.1	41.7	44.4	9
30	22.5	25.2	27.9	30.5	33.2	35.9	38.5	41.2	43.9	46.5	10
33	24.6	27.3	30.0	32.6	35.3	38.0	40.6	43.3	46.0	48.6	11
36	26.7	29.4	32.1	34.7	37.4	40.1	42.7	45.4	48.1	50.7	12
39	28.9	31.5	34.2	36.9	39.5	42.2	44.9	47.5	50.2	52.9	13

Number of Sidewall Sheets per Hoppered Tank

Tiers High	1	2	3	4	5	6	7	8	9	10	Sheets per Tier
Nom.Dia.											
6	2	4	6	8	10	12	14	16	18	20	2
9	3	6	9	12	15	18	21	24	27	30	3
12	4	8	12	16	20	24	28	32	36	40	4
15	5	10	15	20	25	30	35	40	45	50	5
18	6	12	18	24	30	36	42	48	54	60	6
21	7	14	21	28	35	42	49	56	63	70	7
24	8	16	24	32	40	48	56	64	72	80	8
27	9	18	27	36	45	54	63	72	81	90	9
30	10	20	30	40	50	60	70	80	90	100	10
33	11	22	33	44	55	66	77	88	99	110	11
36	12	24	36	48	60	72	84	96	108	120	12
39	13	26	39	52	65	78	91	104	117	130	13

Exterior Surface Area in Square Feet

Tiers High	1	2	3	4	5	6	7	8	9	10	Sheets per Tier	SF Area Roof & Hopper
Nom.Dia.												
6	111	161	211	261	311	361	411	461	511	561	2	61
9	222	297	372	447	522	597	672	747	822	897	3	147
12	368	468	568	668	768	868	968	1,068	1,168	1,268	4	268
15	548	673	798	923	1,048	1,173	1,298	1,423	1,548	1,673	5	423
18	762	912	1,062	1,212	1,362	1,512	1,662	1,812	1,962	2,112	6	612
21	1,011	1,186	1,361	1,536	1,711	1,886	2,061	2,236	2,411	2,586	7	836
24	1,294	1,494	1,694	1,894	2,094	2,294	2,494	2,694	2,894	3,094	8	1,094
27	1,611	1,836	2,061	2,286	2,511	2,736	2,961	3,186	3,411	3,636	9	1,386
30	1,963	2,213	2,463	2,713	2,963	3,213	3,463	3,713	3,963	4,213	10	1,713
33	2,349	2,624	2,899	3,174	3,449	3,724	3,999	4,274	4,549	4,824	11	2,074
36	2,770	3,070	3,370	3,670	3,970	4,270	4,570	4,870	5,170	5,470	12	2,470
39	3,225	3,550	3,875	4,200	4,525	4,850	5,175	5,500	5,825	6,150	13	2,900

25.0 Square Foot Coverage per Sidewall Sheet

RATIO of Cu.Ft. Capacity TO: Sq.Ft. Exterior Surface

Tiers High	1	2	3	4	5	6	7	8	9	10	Sheets per Tier
Nom.Dia.											
6	1.01	1.16	1.24	1.29	1.32	1.34	1.36	1.38	1.39	1.40	2
9	1.35	1.57	1.71	1.80	1.86	1.91	1.94	1.97	2.00	2.02	3
12	1.66	1.95	2.13	2.26	2.35	2.42	2.48	2.53	2.57	2.60	4
15	1.97	2.30	2.52	2.69	2.81	2.91	2.99	3.05	3.11	3.15	5
18	2.28	2.64	2.90	3.09	3.25	3.37	3.47	3.55	3.62	3.68	6
21	2.58	2.97	3.26	3.48	3.66	3.80	3.92	4.03	4.11	4.19	7
24	2.87	3.29	3.60	3.85	4.05	4.22	4.36	4.48	4.58	4.67	8
27	3.17	3.60	3.94	4.21	4.44	4.62	4.78	4.92	5.04	5.14	9
30	3.46	3.91	4.27	4.57	4.81	5.02	5.19	5.34	5.48	5.60	10
33	3.75	4.22	4.60	4.91	5.17	5.40	5.59	5.76	5.91	6.04	11
36	4.04	4.52	4.92	5.25	5.53	5.77	5.98	6.16	6.32	6.47	12
39	4.33	4.82	5.23	5.58	5.87	6.13	6.35	6.55	6.73	6.88	13