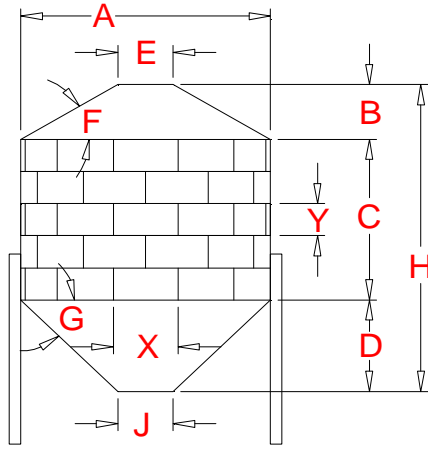


Cubic Foot Capacity of 40° Hopper Tank using 112.5" x 44" Sheets



- E** 30 Inch Diameter-Top Opening
- F** 30 degree of Roof
- G** 40 degree of Hopper
- J** 16 Inch Dia.-Discharge Opening
- X** 112.5 Inch Arc Length
- Y** 44 Inch Tier (Ring) Height

Tiers High	1	2	3	4	5	6	7	8	9	10	Sheets per Tier	Actual Diameter Feet	Roof Height Feet	Hopper Height Feet
C (ft)	3.67	7.33	11.00	14.67	18.33	22.00	25.67	29.33	33.00	36.67		A	B	D
Nom.Dia.	CAPACITY IN CUBIC FEET													
6	141	243	346	448	551	653	756	859	961	1,064	2	5.968	1.001	1.945
9	362	593	824	1,055	1,286	1,516	1,747	1,978	2,209	2,440	3	8.952	1.863	3.197
12	724	1,135	1,545	1,955	2,366	2,776	3,186	3,596	4,007	4,417	4	11.937	2.724	4.449
15	1,256	1,897	2,538	3,179	3,820	4,461	5,102	5,743	6,385	7,026	5	14.921	3.586	5.701
18	1,986	2,909	3,833	4,756	5,679	6,602	7,525	8,449	9,372	10,295	6	17.905	4.447	6.953
21	2,945	4,202	5,458	6,715	7,972	9,228	10,485	11,741	12,998	14,255	7	20.889	5.308	8.205
24	4,163	5,804	7,445	9,086	10,728	12,369	14,010	15,652	17,293	18,934	8	23.873	6.170	9.457
27	5,668	7,745	9,822	11,900	13,977	16,054	18,131	20,209	22,286	24,363	9	26.857	7.031	10.709
30	7,490	10,055	12,619	15,184	17,748	20,313	22,877	25,442	28,006	30,571	10	29.842	7.893	11.961
33	9,660	12,763	15,866	18,969	22,072	25,175	28,278	31,381	34,484	37,587	11	32.826	8.754	13.213
36	12,206	15,899	19,592	23,284	26,977	30,670	34,363	38,056	41,749	45,442	12	35.810	9.616	14.465
39	15,158	19,492	23,826	28,160	32,494	36,828	41,162	45,496	49,830	54,164	13	38.794	10.477	15.717

Dimension "H" in Feet

Tiers High	1	2	3	4	5	6	7	8	9	10	Sheets per Tier
Nom.Dia.											
6	6.6	10.3	13.9	17.6	21.3	24.9	28.6	32.3	35.9	39.6	2
9	8.7	12.4	16.1	19.7	23.4	27.1	30.7	34.4	38.1	41.7	3
12	10.8	14.5	18.2	21.8	25.5	29.2	32.8	36.5	40.2	43.8	4
15	13.0	16.6	20.3	24.0	27.6	31.3	35.0	38.6	42.3	46.0	5
18	15.1	18.7	22.4	26.1	29.7	33.4	37.1	40.7	44.4	48.1	6
21	17.2	20.8	24.5	28.2	31.8	35.5	39.2	42.8	46.5	50.2	7
24	19.3	23.0	26.6	30.3	34.0	37.6	41.3	45.0	48.6	52.3	8
27	21.4	25.1	28.7	32.4	36.1	39.7	43.4	47.1	50.7	54.4	9
30	23.5	27.2	30.9	34.5	38.2	41.9	45.5	49.2	52.9	56.5	10
33	25.6	29.3	33.0	36.6	40.3	44.0	47.6	51.3	55.0	58.6	11
36	27.7	31.4	35.1	38.7	42.4	46.1	49.7	53.4	57.1	60.7	12
39	29.9	33.5	37.2	40.9	44.5	48.2	51.9	55.5	59.2	62.9	13

Number of Sidewall Sheets per Hoppered Tank

Tiers High	1	2	3	4	5	6	7	8	9	10	Sheets per Tier
Nom.Dia.											
6	2	4	6	8	10	12	14	16	18	20	2
9	3	6	9	12	15	18	21	24	27	30	3
12	4	8	12	16	20	24	28	32	36	40	4
15	5	10	15	20	25	30	35	40	45	50	5
18	6	12	18	24	30	36	42	48	54	60	6
21	7	14	21	28	35	42	49	56	63	70	7
24	8	16	24	32	40	48	56	64	72	80	8
27	9	18	27	36	45	54	63	72	81	90	9
30	10	20	30	40	50	60	70	80	90	100	10
33	11	22	33	44	55	66	77	88	99	110	11
36	12	24	36	48	60	72	84	96	108	120	12
39	13	26	39	52	65	78	91	104	117	130	13

Exterior Surface Area in Square Feet

Tiers High	1	2	3	4	5	6	7	8	9	10	Sheets per Tier	SF Area Roof & Hopper
Nom.Dia.												
6	130	199	268	336	405	474	543	611	680	749	2	61
9	250	354	457	560	663	766	869	972	1,075	1,179	3	147
12	405	543	680	818	955	1,093	1,230	1,368	1,505	1,643	4	268
15	595	766	938	1,110	1,282	1,454	1,626	1,798	1,970	2,141	5	423
18	818	1,024	1,231	1,437	1,643	1,849	2,056	2,262	2,468	2,674	6	612
21	1,076	1,317	1,557	1,798	2,039	2,279	2,520	2,761	3,001	3,242	7	836
24	1,369	1,644	1,919	2,194	2,469	2,744	3,019	3,294	3,569	3,844	8	1,094
27	1,696	2,005	2,314	2,624	2,933	3,242	3,552	3,861	4,171	4,480	9	1,386
30	2,057	2,401	2,744	3,088	3,432	3,776	4,119	4,463	4,807	5,151	10	1,713
33	2,453	2,831	3,209	3,587	3,965	4,343	4,721	5,099	5,478	5,856	11	2,074
36	2,883	3,295	3,708	4,120	4,533	4,945	5,358	5,770	6,183	6,595	12	2,470
39	3,347	3,794	4,241	4,688	5,135	5,582	6,028	6,475	6,922	7,369	13	2,900

34.4 Square Foot Coverage per Sidewall Sheet

RATIO of Cu.Ft. Capacity TO: Sq.Ft. Exterior Surface

Tiers High	1	2	3	4	5	6	7	8	9	10	Sheets per Tier
Nom.Dia.											
6	1.08	1.22	1.29	1.33	1.36	1.38	1.39	1.40	1.41	1.42	2
9	1.45	1.68	1.80	1.88	1.94	1.98	2.01	2.03	2.05	2.07	3
12	1.79	2.09	2.27	2.39	2.48	2.54	2.59	2.63	2.66	2.69	4
15	2.11	2.47	2.70	2.86	2.98	3.07	3.14	3.19	3.24	3.28	5
18	2.43	2.84	3.11	3.31	3.46	3.57	3.66	3.74	3.80	3.85	6
21	2.74	3.19	3.50	3.73	3.91	4.05	4.16	4.25	4.33	4.40	7
24	3.04	3.53	3.88	4.14	4.35	4.51	4.64	4.75	4.85	4.93	8
27	3.34	3.86	4.24	4.54	4.77	4.95	5.10	5.23	5.34	5.44	9
30	3.64	4.19	4.60	4.92	5.17	5.38	5.55	5.70	5.83	5.94	10
33	3.94	4.51	4.94	5.29	5.57	5.80	5.99	6.15	6.30	6.42	11
36	4.23	4.82	5.28	5.65	5.95	6.20	6.41	6.60	6.75	6.89	12
39	4.53	5.14	5.62	6.01	6.33	6.60	6.83	7.03	7.20	7.35	13