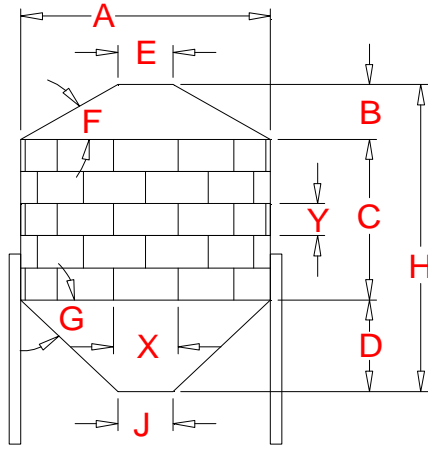


Cubic Foot Capacity of 40° Hopper Tank using 116.5" x 42" Sheets



- E** 30 Inch Diameter-Top Opening
- F** 30 degree of Roof
- G** 40 degree of Hopper
- J** 16 Inch Dia.-Discharge Opening
- X** 116.5 Inch Arc Length
- Y** 42 Inch Tier (Ring) Height

Tiers High	1	2	3	4	5	6	7	8	9	10	Sheets per Tier	Actual Diameter Feet	Roof Height Feet	Hopper Height Feet
C (ft)	3.50	7.00	10.50	14.00	17.50	21.00	24.50	28.00	31.50	35.00		A	B	D
Nom.Dia.	CAPACITY IN CUBIC FEET													
6	147	252	357	462	567	672	777	882	987	1,092	2	6.181	1.062	2.034
9	383	619	855	1,091	1,328	1,564	1,800	2,036	2,273	2,509	3	9.271	1.955	3.330
12	769	1,189	1,609	2,029	2,449	2,869	3,289	3,709	4,129	4,549	4	12.361	2.847	4.627
15	1,339	1,995	2,651	3,308	3,964	4,620	5,276	5,933	6,589	7,245	5	15.451	3.739	5.923
19	2,125	3,071	4,016	4,961	5,906	6,851	7,796	8,741	9,686	10,631	6	18.542	4.631	7.220
22	3,162	4,448	5,734	7,021	8,307	9,593	10,879	12,166	13,452	14,738	7	21.632	5.523	8.516
25	4,480	6,160	7,840	9,520	11,200	12,881	14,561	16,241	17,921	19,601	8	24.722	6.415	9.813
28	6,114	8,240	10,366	12,493	14,619	16,745	18,872	20,998	23,125	25,251	9	27.812	7.307	11.109
31	8,095	10,721	13,346	15,971	18,596	21,221	23,846	26,471	29,096	31,721	10	30.903	8.199	12.406
34	10,458	13,634	16,811	19,987	23,163	26,340	29,516	32,693	35,869	39,045	11	33.993	9.091	13.702
37	13,234	17,014	20,794	24,574	28,355	32,135	35,915	39,695	43,475	47,255	12	37.083	9.983	14.999
40	16,456	20,893	25,329	29,766	34,202	38,639	43,075	47,511	51,948	56,384	13	40.173	10.875	16.295

Dimension "H" in Feet

Tiers High	1	2	3	4	5	6	7	8	9	10	Sheets per Tier
Nom.Dia.											
6	6.6	10.1	13.6	17.1	20.6	24.1	27.6	31.1	34.6	38.1	2
9	8.8	12.3	15.8	19.3	22.8	26.3	29.8	33.3	36.8	40.3	3
12	11.0	14.5	18.0	21.5	25.0	28.5	32.0	35.5	39.0	42.5	4
15	13.2	16.7	20.2	23.7	27.2	30.7	34.2	37.7	41.2	44.7	5
19	15.4	18.9	22.4	25.9	29.4	32.9	36.4	39.9	43.4	46.9	6
22	17.5	21.0	24.5	28.0	31.5	35.0	38.5	42.0	45.5	49.0	7
25	19.7	23.2	26.7	30.2	33.7	37.2	40.7	44.2	47.7	51.2	8
28	21.9	25.4	28.9	32.4	35.9	39.4	42.9	46.4	49.9	53.4	9
31	24.1	27.6	31.1	34.6	38.1	41.6	45.1	48.6	52.1	55.6	10
34	26.3	29.8	33.3	36.8	40.3	43.8	47.3	50.8	54.3	57.8	11
37	28.5	32.0	35.5	39.0	42.5	46.0	49.5	53.0	56.5	60.0	12
40	30.7	34.2	37.7	41.2	44.7	48.2	51.7	55.2	58.7	62.2	13

Number of Sidewall Sheets per Hoppered Tank

Tiers High	1	2	3	4	5	6	7	8	9	10	Sheets per Tier
Nom.Dia.											
6	2	4	6	8	10	12	14	16	18	20	2
9	3	6	9	12	15	18	21	24	27	30	3
12	4	8	12	16	20	24	28	32	36	40	4
15	5	10	15	20	25	30	35	40	45	50	5
19	6	12	18	24	30	36	42	48	54	60	6
22	7	14	21	28	35	42	49	56	63	70	7
25	8	16	24	32	40	48	56	64	72	80	8
28	9	18	27	36	45	54	63	72	81	90	9
31	10	20	30	40	50	60	70	80	90	100	10
34	11	22	33	44	55	66	77	88	99	110	11
37	12	24	36	48	60	72	84	96	108	120	12
40	13	26	39	52	65	78	91	104	117	130	13

Exterior Surface Area in Square Feet

Tiers High	1	2	3	4	5	6	7	8	9	10	Sheets per Tier	SF Area Roof & Hopper
Nom.Dia.												
6	134	202	270	338	406	474	542	610	678	746	2	66
9	261	362	464	566	668	770	872	974	1,076	1,178	3	159
12	424	560	695	831	967	1,103	1,239	1,375	1,511	1,647	4	288
15	624	794	963	1,133	1,303	1,473	1,643	1,813	1,983	2,153	5	454
19	861	1,065	1,268	1,472	1,676	1,880	2,084	2,288	2,492	2,696	6	657
22	1,134	1,372	1,610	1,848	2,086	2,324	2,562	2,799	3,037	3,275	7	897
25	1,445	1,717	1,989	2,261	2,533	2,804	3,076	3,348	3,620	3,892	8	1,173
28	1,793	2,099	2,405	2,710	3,016	3,322	3,628	3,934	4,239	4,545	9	1,487
31	2,177	2,517	2,857	3,197	3,537	3,876	4,216	4,556	4,896	5,236	10	1,838
34	2,599	2,973	3,346	3,720	4,094	4,468	4,842	5,215	5,589	5,963	11	2,225
37	3,057	3,465	3,873	4,281	4,688	5,096	5,504	5,912	6,319	6,727	12	2,650
40	3,553	3,994	4,436	4,878	5,319	5,761	6,203	6,645	7,086	7,528	13	3,111

34.0 Square Foot Coverage per Sidewall Sheet

RATIO of Cu.Ft. Capacity TO: Sq.Ft. Exterior Surface

Tiers High	1	2	3	4	5	6	7	8	9	10	Sheets per Tier
Nom.Dia.											
6	1.10	1.25	1.32	1.37	1.40	1.42	1.43	1.45	1.46	1.46	2
9	1.47	1.71	1.84	1.93	1.99	2.03	2.06	2.09	2.11	2.13	3
12	1.81	2.12	2.31	2.44	2.53	2.60	2.65	2.70	2.73	2.76	4
15	2.15	2.51	2.75	2.92	3.04	3.14	3.21	3.27	3.32	3.37	5
19	2.47	2.88	3.17	3.37	3.52	3.64	3.74	3.82	3.89	3.94	6
22	2.79	3.24	3.56	3.80	3.98	4.13	4.25	4.35	4.43	4.50	7
25	3.10	3.59	3.94	4.21	4.42	4.59	4.73	4.85	4.95	5.04	8
28	3.41	3.93	4.31	4.61	4.85	5.04	5.20	5.34	5.45	5.56	9
31	3.72	4.26	4.67	5.00	5.26	5.47	5.66	5.81	5.94	6.06	10
34	4.02	4.59	5.02	5.37	5.66	5.90	6.10	6.27	6.42	6.55	11
37	4.33	4.91	5.37	5.74	6.05	6.31	6.53	6.71	6.88	7.02	12
40	4.63	5.23	5.71	6.10	6.43	6.71	6.94	7.15	7.33	7.49	13