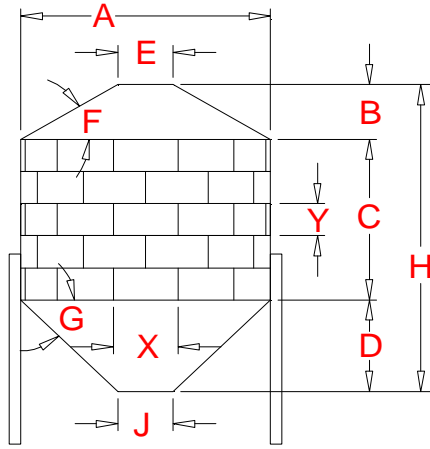


Cubic Foot Capacity of 45° Hopper Tank using 112.5" x 32" Sheets



- E** 30 Inch Diameter-Top Opening
- F** 30 degree of Roof
- G** 45 degree of Hopper
- J** 16 Inch Dia.-Discharge Opening
- X** 112.5 Inch Arc Length
- Y** 32 Inch Tier (Ring) Height

Tiers High	1	2	3	4	5	6	7	8	9	10	Sheets per Tier	Actual Diameter Feet	Roof Height Feet	Hopper Height Feet
C (ft)	2.67	5.33	8.00	10.67	13.33	16.00	18.67	21.33	24.00	26.67		A	B	D
Nom.Dia.	CAPACITY IN CUBIC FEET													
6	117	192	266	341	415	490	565	639	714	788	2	5.968	1.001	2.317
9	315	482	650	818	986	1,154	1,322	1,490	1,657	1,825	3	8.952	1.863	3.810
12	648	947	1,245	1,543	1,842	2,140	2,439	2,737	3,035	3,334	4	11.937	2.724	5.302
15	1,151	1,617	2,083	2,549	3,016	3,482	3,948	4,415	4,881	5,347	5	14.921	3.586	6.794
18	1,855	2,527	3,198	3,869	4,541	5,212	5,884	6,555	7,227	7,898	6	17.905	4.447	8.286
21	2,794	3,708	4,622	5,536	6,450	7,364	8,278	9,192	10,106	11,020	7	20.889	5.308	9.778
24	4,001	5,195	6,389	7,582	8,776	9,970	11,163	12,357	13,551	14,744	8	23.873	6.170	11.270
27	5,509	7,020	8,531	10,041	11,552	13,063	14,574	16,084	17,595	19,106	9	26.857	7.031	12.762
30	7,351	9,216	11,081	12,946	14,811	16,676	18,541	20,406	22,271	24,136	10	29.842	7.893	14.254
33	9,558	11,815	14,072	16,329	18,585	20,842	23,099	25,356	27,613	29,869	11	32.826	8.754	15.746
36	12,166	14,851	17,537	20,223	22,909	25,594	28,280	30,966	33,652	36,337	12	35.810	9.616	17.238
39	15,205	18,357	21,509	24,661	27,813	30,965	34,117	37,269	40,421	43,574	13	38.794	10.477	18.730

Dimension "H" in Feet

Tiers High	1	2	3	4	5	6	7	8	9	10	Sheets per Tier
Nom.Dia.											
6	6.0	8.7	11.3	14.0	16.7	19.3	22.0	24.7	27.3	30.0	2
9	8.3	11.0	13.7	16.3	19.0	21.7	24.3	27.0	29.7	32.3	3
12	10.7	13.4	16.0	18.7	21.4	24.0	26.7	29.4	32.0	34.7	4
15	13.0	15.7	18.4	21.0	23.7	26.4	29.0	31.7	34.4	37.0	5
18	15.4	18.1	20.7	23.4	26.1	28.7	31.4	34.1	36.7	39.4	6
21	17.8	20.4	23.1	25.8	28.4	31.1	33.8	36.4	39.1	41.8	7
24	20.1	22.8	25.4	28.1	30.8	33.4	36.1	38.8	41.4	44.1	8
27	22.5	25.1	27.8	30.5	33.1	35.8	38.5	41.1	43.8	46.5	9
30	24.8	27.5	30.1	32.8	35.5	38.1	40.8	43.5	46.1	48.8	10
33	27.2	29.8	32.5	35.2	37.8	40.5	43.2	45.8	48.5	51.2	11
36	29.5	32.2	34.9	37.5	40.2	42.9	45.5	48.2	50.9	53.5	12
39	31.9	34.5	37.2	39.9	42.5	45.2	47.9	50.5	53.2	55.9	13

Number of Sidewall Sheets per Hoppered Tank

Tiers High	1	2	3	4	5	6	7	8	9	10	Sheets per Tier
Nom.Dia.											
6	2	4	6	8	10	12	14	16	18	20	2
9	3	6	9	12	15	18	21	24	27	30	3
12	4	8	12	16	20	24	28	32	36	40	4
15	5	10	15	20	25	30	35	40	45	50	5
18	6	12	18	24	30	36	42	48	54	60	6
21	7	14	21	28	35	42	49	56	63	70	7
24	8	16	24	32	40	48	56	64	72	80	8
27	9	18	27	36	45	54	63	72	81	90	9
30	10	20	30	40	50	60	70	80	90	100	10
33	11	22	33	44	55	66	77	88	99	110	11
36	12	24	36	48	60	72	84	96	108	120	12
39	13	26	39	52	65	78	91	104	117	130	13

Exterior Surface Area in Square Feet

Tiers High	1	2	3	4	5	6	7	8	9	10	Sheets per Tier	SF Area Roof & Hopper
Nom.Dia.												
6	114	164	214	264	314	364	414	464	514	564	2	64
9	229	304	379	454	529	604	679	754	829	904	3	154
12	380	480	580	680	780	880	980	1,080	1,180	1,280	4	280
15	567	692	817	942	1,067	1,192	1,317	1,442	1,567	1,692	5	442
18	789	939	1,089	1,239	1,389	1,539	1,689	1,839	1,989	2,139	6	639
21	1,048	1,223	1,398	1,573	1,748	1,923	2,098	2,273	2,448	2,623	7	873
24	1,342	1,542	1,742	1,942	2,142	2,342	2,542	2,742	2,942	3,142	8	1,142
27	1,673	1,898	2,123	2,348	2,573	2,798	3,023	3,248	3,473	3,698	9	1,448
30	2,039	2,289	2,539	2,789	3,039	3,289	3,539	3,789	4,039	4,289	10	1,789
33	2,441	2,716	2,991	3,266	3,541	3,816	4,091	4,366	4,641	4,916	11	2,166
36	2,880	3,180	3,480	3,780	4,080	4,380	4,680	4,980	5,280	5,580	12	2,580
39	3,354	3,679	4,004	4,329	4,654	4,979	5,304	5,629	5,954	6,279	13	3,029

25.0 Square Foot Coverage per Sidewall Sheet

RATIO of Cu.Ft. Capacity TO: Sq.Ft. Exterior Surface

Tiers High	1	2	3	4	5	6	7	8	9	10	Sheets per Tier
Nom.Dia.											
6	1.02	1.17	1.24	1.29	1.32	1.35	1.36	1.38	1.39	1.40	2
9	1.37	1.59	1.72	1.80	1.86	1.91	1.95	1.98	2.00	2.02	3
12	1.71	1.97	2.15	2.27	2.36	2.43	2.49	2.53	2.57	2.60	4
15	2.03	2.34	2.55	2.71	2.83	2.92	3.00	3.06	3.12	3.16	5
18	2.35	2.69	2.94	3.12	3.27	3.39	3.48	3.56	3.63	3.69	6
21	2.67	3.03	3.31	3.52	3.69	3.83	3.95	4.04	4.13	4.20	7
24	2.98	3.37	3.67	3.90	4.10	4.26	4.39	4.51	4.61	4.69	8
27	3.29	3.70	4.02	4.28	4.49	4.67	4.82	4.95	5.07	5.17	9
30	3.60	4.03	4.36	4.64	4.87	5.07	5.24	5.39	5.51	5.63	10
33	3.92	4.35	4.70	5.00	5.25	5.46	5.65	5.81	5.95	6.08	11
36	4.22	4.67	5.04	5.35	5.62	5.84	6.04	6.22	6.37	6.51	12
39	4.53	4.99	5.37	5.70	5.98	6.22	6.43	6.62	6.79	6.94	13