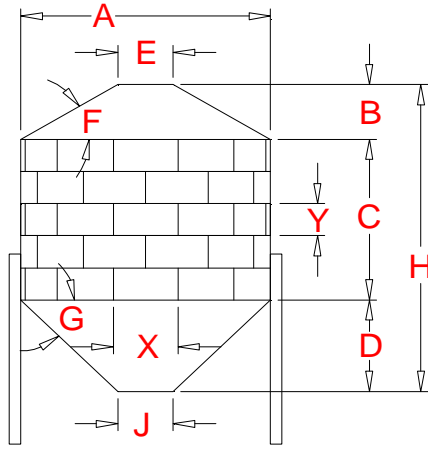


### Cubic Foot Capacity of 45° Hopper Tank using 112.5" x 44" Sheets



- E** 30 Inch Diameter-Top Opening
- F** 30 degree of Roof
- G** 45 degree of Hopper
- J** 16 Inch Dia.-Discharge Opening
- X** 112.5 Inch Arc Length
- Y** 44 Inch Tier (Ring) Height

Tiers High	1	2	3	4	5	6	7	8	9	10	Sheets per Tier	Actual Diameter Feet	Roof Height Feet	Hopper Height Feet
<b>C (ft)</b>	3.67	7.33	11.00	14.67	18.33	22.00	25.67	29.33	33.00	36.67		<b>A</b>	<b>B</b>	<b>D</b>
Nom.Dia.	CAPACITY IN CUBIC FEET													
6	145	248	350	453	555	658	760	863	966	1,068	2	5.968	1.001	2.317
9	377	608	839	1,070	1,301	1,531	1,762	1,993	2,224	2,455	3	8.952	1.863	3.810
12	760	1,170	1,581	1,991	2,401	2,812	3,222	3,632	4,043	4,453	4	11.937	2.724	5.302
15	1,326	1,967	2,608	3,249	3,890	4,531	5,172	5,813	6,455	7,096	5	14.921	3.586	6.794
18	2,107	3,030	3,953	4,877	5,800	6,723	7,646	8,569	9,493	10,416	6	17.905	4.447	8.286
21	3,137	4,394	5,650	6,907	8,164	9,420	10,677	11,933	13,190	14,447	7	20.889	5.308	9.778
24	4,449	6,090	7,732	9,373	11,014	12,656	14,297	15,938	17,579	19,221	8	23.873	6.170	11.270
27	6,076	8,153	10,230	12,308	14,385	16,462	18,539	20,617	22,694	24,771	9	26.857	7.031	12.762
30	8,050	10,614	13,179	15,744	18,308	20,873	23,437	26,002	28,566	31,131	10	29.842	7.893	14.254
33	10,405	13,508	16,611	19,714	22,817	25,920	29,023	32,126	35,229	38,332	11	32.826	8.754	15.746
36	13,173	16,866	20,559	24,252	27,944	31,637	35,330	39,023	42,716	46,409	12	35.810	9.616	17.238
39	16,387	20,721	25,055	29,389	33,723	38,057	42,391	46,726	51,060	55,394	13	38.794	10.477	18.730

### Dimension "H" in Feet

Tiers High	1	2	3	4	5	6	7	8	9	10	Sheets per Tier
Nom.Dia.											
6	7.0	10.7	14.3	18.0	21.7	25.3	29.0	32.7	36.3	40.0	2
9	9.3	13.0	16.7	20.3	24.0	27.7	31.3	35.0	38.7	42.3	3
12	11.7	15.4	19.0	22.7	26.4	30.0	33.7	37.4	41.0	44.7	4
15	14.0	17.7	21.4	25.0	28.7	32.4	36.0	39.7	43.4	47.0	5
18	16.4	20.1	23.7	27.4	31.1	34.7	38.4	42.1	45.7	49.4	6
21	18.8	22.4	26.1	29.8	33.4	37.1	40.8	44.4	48.1	51.8	7
24	21.1	24.8	28.4	32.1	35.8	39.4	43.1	46.8	50.4	54.1	8
27	23.5	27.1	30.8	34.5	38.1	41.8	45.5	49.1	52.8	56.5	9
30	25.8	29.5	33.1	36.8	40.5	44.1	47.8	51.5	55.1	58.8	10
33	28.2	31.8	35.5	39.2	42.8	46.5	50.2	53.8	57.5	61.2	11
36	30.5	34.2	37.9	41.5	45.2	48.9	52.5	56.2	59.9	63.5	12
39	32.9	36.5	40.2	43.9	47.5	51.2	54.9	58.5	62.2	65.9	13

### Number of Sidewall Sheets per Hoppered Tank

Tiers High	1	2	3	4	5	6	7	8	9	10	Sheets per Tier
Nom.Dia.											
<b>6</b>	2	4	6	8	10	12	14	16	18	20	<b>2</b>
<b>9</b>	3	6	9	12	15	18	21	24	27	30	<b>3</b>
<b>12</b>	4	8	12	16	20	24	28	32	36	40	<b>4</b>
<b>15</b>	5	10	15	20	25	30	35	40	45	50	<b>5</b>
<b>18</b>	6	12	18	24	30	36	42	48	54	60	<b>6</b>
<b>21</b>	7	14	21	28	35	42	49	56	63	70	<b>7</b>
<b>24</b>	8	16	24	32	40	48	56	64	72	80	<b>8</b>
<b>27</b>	9	18	27	36	45	54	63	72	81	90	<b>9</b>
<b>30</b>	10	20	30	40	50	60	70	80	90	100	<b>10</b>
<b>33</b>	11	22	33	44	55	66	77	88	99	110	<b>11</b>
<b>36</b>	12	24	36	48	60	72	84	96	108	120	<b>12</b>
<b>39</b>	13	26	39	52	65	78	91	104	117	130	<b>13</b>

**Exterior Surface Area in Square Feet**

Tiers High	1	2	3	4	5	6	7	8	9	10	Sheets per Tier	SF Area Roof & Hopper
Nom.Dia.												
<b>6</b>	133	202	270	339	408	477	545	614	683	752	<b>2</b>	64
<b>9</b>	257	360	463	567	670	773	876	979	1,082	1,185	<b>3</b>	154
<b>12</b>	417	555	692	830	967	1,105	1,242	1,380	1,517	1,655	<b>4</b>	280
<b>15</b>	613	785	957	1,129	1,301	1,473	1,645	1,817	1,988	2,160	<b>5</b>	442
<b>18</b>	845	1,052	1,258	1,464	1,670	1,877	2,083	2,289	2,495	2,702	<b>6</b>	639
<b>21</b>	1,113	1,354	1,595	1,835	2,076	2,317	2,557	2,798	3,038	3,279	<b>7</b>	873
<b>24</b>	1,417	1,692	1,967	2,242	2,517	2,792	3,067	3,342	3,617	3,892	<b>8</b>	1,142
<b>27</b>	1,757	2,066	2,376	2,685	2,995	3,304	3,613	3,923	4,232	4,541	<b>9</b>	1,448
<b>30</b>	2,133	2,477	2,820	3,164	3,508	3,852	4,195	4,539	4,883	5,227	<b>10</b>	1,789
<b>33</b>	2,545	2,923	3,301	3,679	4,057	4,435	4,813	5,191	5,570	5,948	<b>11</b>	2,166
<b>36</b>	2,992	3,405	3,817	4,230	4,642	5,055	5,467	5,880	6,292	6,705	<b>12</b>	2,580
<b>39</b>	3,476	3,923	4,369	4,816	5,263	5,710	6,157	6,604	7,051	7,498	<b>13</b>	3,029

**34.4 Square Foot Coverage per Sidewall Sheet**

**RATIO of Cu.Ft. Capacity TO: Sq.Ft. Exterior Surface**

Tiers High	1	2	3	4	5	6	7	8	9	10	Sheets per Tier
Nom.Dia.											
<b>6</b>	1.09	1.23	1.29	1.33	1.36	1.38	1.39	1.41	1.41	1.42	<b>2</b>
<b>9</b>	1.47	1.69	1.81	1.89	1.94	1.98	2.01	2.04	2.06	2.07	<b>3</b>
<b>12</b>	1.82	2.11	2.28	2.40	2.48	2.54	2.59	2.63	2.66	2.69	<b>4</b>
<b>15</b>	2.16	2.50	2.72	2.88	2.99	3.08	3.14	3.20	3.25	3.28	<b>5</b>
<b>18</b>	2.49	2.88	3.14	3.33	3.47	3.58	3.67	3.74	3.80	3.86	<b>6</b>
<b>21</b>	2.82	3.25	3.54	3.76	3.93	4.07	4.18	4.27	4.34	4.41	<b>7</b>
<b>24</b>	3.14	3.60	3.93	4.18	4.38	4.53	4.66	4.77	4.86	4.94	<b>8</b>
<b>27</b>	3.46	3.95	4.31	4.58	4.80	4.98	5.13	5.26	5.36	5.45	<b>9</b>
<b>30</b>	3.77	4.29	4.67	4.98	5.22	5.42	5.59	5.73	5.85	5.96	<b>10</b>
<b>33</b>	4.09	4.62	5.03	5.36	5.62	5.84	6.03	6.19	6.33	6.44	<b>11</b>
<b>36</b>	4.40	4.95	5.39	5.73	6.02	6.26	6.46	6.64	6.79	6.92	<b>12</b>
<b>39</b>	4.71	5.28	5.73	6.10	6.41	6.66	6.89	7.08	7.24	7.39	<b>13</b>