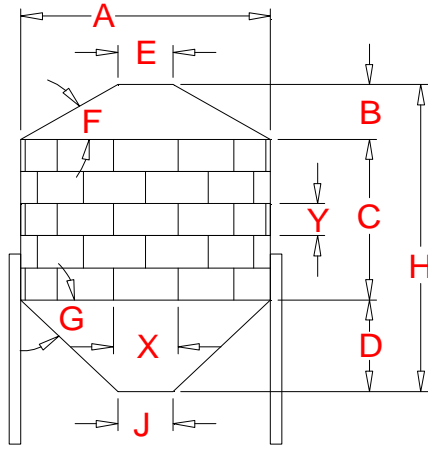


Cubic Foot Capacity of 60° Hopper Tank using 116.5" x 42" Sheets



- E** 30 Inch Diameter-Top Opening
- F** 30 degree of Roof
- G** 60 degree of Hopper
- J** 16 Inch Dia.-Discharge Opening
- X** 116.5 Inch Arc Length
- Y** 42 Inch Tier (Ring) Height

Tiers High	1	2	3	4	5	6	7	8	9	10	Sheets per Tier	Actual Diameter Feet	Roof Height Feet	Hopper Height Feet
C (ft)	3.50	7.00	10.50	14.00	17.50	21.00	24.50	28.00	31.50	35.00			A	B
Nom.Dia.	CAPACITY IN CUBIC FEET													
6	175	280	385	490	595	700	805	910	1,015	1,120	2	6.181	1.062	4.198
9	475	712	948	1,184	1,420	1,657	1,893	2,129	2,365	2,602	3	9.271	1.955	6.874
12	989	1,409	1,829	2,249	2,669	3,089	3,509	3,929	4,349	4,769	4	12.361	2.847	9.550
15	1,770	2,426	3,082	3,739	4,395	5,051	5,707	6,364	7,020	7,676	5	15.451	3.739	12.227
19	2,870	3,815	4,760	5,705	6,650	7,595	8,541	9,486	10,431	11,376	6	18.542	4.631	14.903
22	4,345	5,631	6,917	8,203	9,490	10,776	12,062	13,349	14,635	15,921	7	21.632	5.523	17.579
25	6,246	7,926	9,606	11,286	12,966	14,646	16,326	18,007	19,687	21,367	8	24.722	6.415	20.255
28	8,628	10,755	12,881	15,007	17,134	19,260	21,386	23,513	25,639	27,765	9	27.812	7.307	22.931
31	11,545	14,170	16,795	19,420	22,045	24,670	27,295	29,920	32,545	35,171	10	30.903	8.199	25.608
34	15,049	18,225	21,402	24,578	27,754	30,931	34,107	37,283	40,460	43,636	11	33.993	9.091	28.284
37	19,194	22,974	26,755	30,535	34,315	38,095	41,875	45,655	49,436	53,216	12	37.083	9.983	30.960
40	24,035	28,471	32,907	37,344	41,780	46,217	50,653	55,090	59,526	63,963	13	40.173	10.875	33.636

Dimension "H" in Feet

Tiers High	1	2	3	4	5	6	7	8	9	10	Sheets per Tier
Nom.Dia.											
6	8.8	12.3	15.8	19.3	22.8	26.3	29.8	33.3	36.8	40.3	2
9	12.3	15.8	19.3	22.8	26.3	29.8	33.3	36.8	40.3	43.8	3
12	15.9	19.4	22.9	26.4	29.9	33.4	36.9	40.4	43.9	47.4	4
15	19.5	23.0	26.5	30.0	33.5	37.0	40.5	44.0	47.5	51.0	5
19	23.0	26.5	30.0	33.5	37.0	40.5	44.0	47.5	51.0	54.5	6
22	26.6	30.1	33.6	37.1	40.6	44.1	47.6	51.1	54.6	58.1	7
25	30.2	33.7	37.2	40.7	44.2	47.7	51.2	54.7	58.2	61.7	8
28	33.7	37.2	40.7	44.2	47.7	51.2	54.7	58.2	61.7	65.2	9
31	37.3	40.8	44.3	47.8	51.3	54.8	58.3	61.8	65.3	68.8	10
34	40.9	44.4	47.9	51.4	54.9	58.4	61.9	65.4	68.9	72.4	11
37	44.4	47.9	51.4	54.9	58.4	61.9	65.4	68.9	72.4	75.9	12
40	48.0	51.5	55.0	58.5	62.0	65.5	69.0	72.5	76.0	79.5	13

Number of Sidewall Sheets per Hoppered Tank

Tiers High	1	2	3	4	5	6	7	8	9	10	Sheets per Tier
Nom.Dia.											
6	2	4	6	8	10	12	14	16	18	20	2
9	3	6	9	12	15	18	21	24	27	30	3
12	4	8	12	16	20	24	28	32	36	40	4
15	5	10	15	20	25	30	35	40	45	50	5
19	6	12	18	24	30	36	42	48	54	60	6
22	7	14	21	28	35	42	49	56	63	70	7
25	8	16	24	32	40	48	56	64	72	80	8
28	9	18	27	36	45	54	63	72	81	90	9
31	10	20	30	40	50	60	70	80	90	100	10
34	11	22	33	44	55	66	77	88	99	110	11
37	12	24	36	48	60	72	84	96	108	120	12
40	13	26	39	52	65	78	91	104	117	130	13

Exterior Surface Area in Square Feet

Tiers High	1	2	3	4	5	6	7	8	9	10	Sheets per Tier	SF Area Roof & Hopper
Nom.Dia.												
6	154	222	290	358	426	494	562	630	698	766	2	86
9	306	408	510	612	714	816	918	1,020	1,122	1,224	3	204
12	506	642	778	914	1,050	1,186	1,322	1,457	1,593	1,729	4	370
15	753	923	1,093	1,263	1,433	1,602	1,772	1,942	2,112	2,282	5	583
19	1,047	1,251	1,455	1,659	1,863	2,067	2,270	2,474	2,678	2,882	6	843
22	1,389	1,627	1,865	2,102	2,340	2,578	2,816	3,054	3,292	3,529	7	1,151
25	1,778	2,050	2,321	2,593	2,865	3,137	3,409	3,681	3,952	4,224	8	1,506
28	2,214	2,520	2,826	3,131	3,437	3,743	4,049	4,355	4,660	4,966	9	1,908
31	2,697	3,037	3,377	3,717	4,057	4,396	4,736	5,076	5,416	5,756	10	2,358
34	3,228	3,602	3,976	4,350	4,723	5,097	5,471	5,845	6,218	6,592	11	2,855
37	3,807	4,214	4,622	5,030	5,438	5,845	6,253	6,661	7,069	7,476	12	3,399
40	4,432	4,874	5,315	5,757	6,199	6,641	7,082	7,524	7,966	8,408	13	3,990

34.0 Square Foot Coverage per Sidewall Sheet

RATIO of Cu.Ft. Capacity TO: Sq.Ft. Exterior Surface

Tiers High	1	2	3	4	5	6	7	8	9	10	Sheets per Tier
Nom.Dia.											
6	1.13	1.26	1.33	1.37	1.40	1.42	1.43	1.44	1.45	1.46	2
9	1.55	1.74	1.86	1.93	1.99	2.03	2.06	2.09	2.11	2.13	3
12	1.95	2.20	2.35	2.46	2.54	2.61	2.66	2.70	2.73	2.76	4
15	2.35	2.63	2.82	2.96	3.07	3.15	3.22	3.28	3.32	3.36	5
19	2.74	3.05	3.27	3.44	3.57	3.68	3.76	3.83	3.89	3.95	6
22	3.13	3.46	3.71	3.90	4.06	4.18	4.28	4.37	4.45	4.51	7
25	3.51	3.87	4.14	4.35	4.53	4.67	4.79	4.89	4.98	5.06	8
28	3.90	4.27	4.56	4.79	4.98	5.15	5.28	5.40	5.50	5.59	9
31	4.28	4.67	4.97	5.22	5.43	5.61	5.76	5.89	6.01	6.11	10
34	4.66	5.06	5.38	5.65	5.88	6.07	6.23	6.38	6.51	6.62	11
37	5.04	5.45	5.79	6.07	6.31	6.52	6.70	6.85	6.99	7.12	12
40	5.42	5.84	6.19	6.49	6.74	6.96	7.15	7.32	7.47	7.61	13