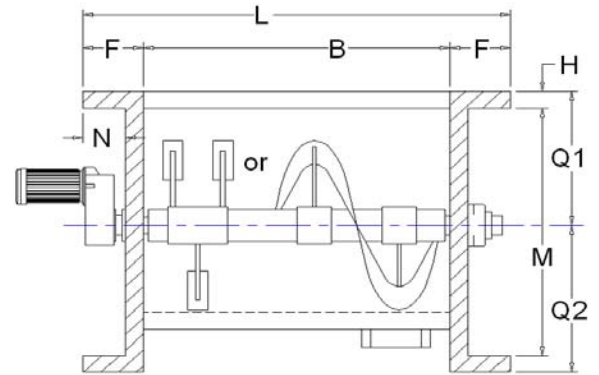
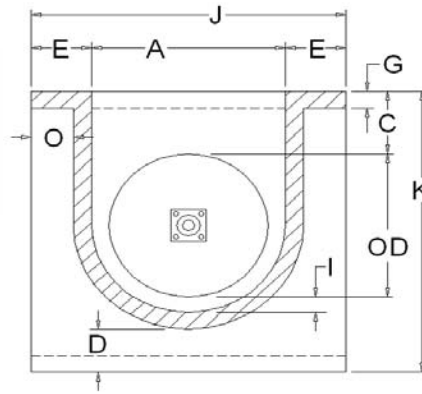


HORIZONTAL MIXER

Paddle or Ribbon(s)



POB 9907, San Diego, California 92169 USA
 Phone 858.488.5500 Fax 858.488.6000
www.omegaten.com



	UNITS		DIM															
			A	B	24	30	36	42	48	54	60	66	72	78	84	90	96	96
Cylinder Inside Diameter	Inch				24	30	36	42	48	54	60	66	72	78	84	90	96	96
Cylinder Inside Length	Inch				48	60	72	84	96	108	120	132	144	156	168	180	180	192
Cross Section of Cylinder	SF				3.6	5.6	8.0	10.9	14.3	18.1	22.3	27.0	32.1	37.7	43.7	50.2	57.1	57.1
Capacity at 40 lbs/cu.ft. density	S.Tons				0.3	0.6	1.0	1.5	2.3	3.3	4.5	5.9	7.7	9.8	12.2	15.1	17.1	18.3
Capacity-level @ Rotor Top	CF				14	28	48	77	114	163	223	297	386	490	612	753	857	914
Capacity of Rotor Only	CF				13	25	42	67	101	143	196	261	339	431	539	663	754	804
Capacity-Entire Tub	CF				17	33	57	91	136	193	265	353	458	582	727	894	1017	1085
Power Required @ Rotor*	HP				3.0	5.4	8.8	13.4	19.2	26.4	35.1	45.4	57.4	71.3	87.0	104.9	117.8	124.8
Power Required @ Drive*	HP				3.5	6.4	10.4	15.8	22.6	31.1	41.3	53.4	67.5	83.8	102.4	123.4	138.6	146.9
Motor Size	HP				5	7.5	15	20	25	40	50	60	75	100	125	125	150	150
Rotor Speed	RPM				58.1	46.1	38.2	32.6	28.4	25.2	22.7	20.6	18.8	17.4	16.1	15.0	14.1	14.1
Weight-Cylinder/Ends/Shaft	LBS				326	529	935	1,315	1,897	2,479	3,160	3,949	5,129	7,176	8,550	11,372	12,554	13,255
Cylinder Sheet wt.	LBS				177.5	278.6	545.9	745.1	975.1	1236.0	1527.9	1850.6	2204.2	3232.4	3751.4	5166.1	5513.7	5881.2
Both End sheets wt.	LBS				121.2	190.9	276.8	378.2	616.8	782.6	968.2	1173.5	1673.9	2291.0	2660.6	3489.1	3974.2	3974.2
Rotor Shaft (Inside only) wt.	LBS				27.2	59.3	112.1	191.8	305.3	460.0	663.6	924.4	1251.0	1652.2	2137.5	2716.6	3065.8	3399.3
Rotor Outside Diameter	Inch		OD		23	29	35	41	47	53	59	65	71	77	83	89	95	95
Rotor SHAFT Diameter	Inch				1.6	2.1	2.6	3.2	3.8	4.4	5.0	5.6	6.2	6.9	7.6	8.2	8.7	8.9
Shaft Stress	PSI				4,012	4,012	4,012	4,012	4,012	4,012	4,012	4,012	4,012	4,012	4,012	4,012	4,012	4,012
Shaft Torque	in-lbs				3,206	7,383	14,578	25,893	42,567	65,972	97,607	139,092	192,166	258,682	340,606	440,013	527,534	559,083
Shaft Moment	in ⁴				0.638	1.940	4.805	10.336	20.054	35.968	60.637	97.238	149.624	222.393	320.949	451.564	575.131	621.443
Dimension	Inch		C		4	5	6	7	8	9	10	11	12	13	14	15	16	16
Dimension	Inch		D		2	2.5	3	3.5	4	4.5	5	5.5	6	6.5	7	7.5	8	8
Dimension	Inch		E		1.5	1.875	2.25	2.625	3	3.375	3.75	4.125	4.5	4.875	5.25	5.625	6	6
Dimension	Inch		F		1.5	1.875	2.25	2.625	3	3.375	3.75	4.125	4.5	4.875	5.25	5.625	6	6
Dimension	Inch		G		7	7	0.25	0.25	0.25	0.25	0.25	0.25	0.25	0.3125	0.3125	0.375	0.375	0.375
Dimension	Inch		H		0.25	0.25	0.25	0.25	0.3125	0.3125	0.3125	0.3125	0.375	0.4375	0.4375	0.5	0.5	0.5
Dimension	Inch		I		0.5	0.5	0.5	0.5	0.5	0.5	0.5	0.5	0.5	0.5	0.5	0.5	0.5	0.5
Dimension	Inch		J		27.000	33.750	40.500	47.250	54.000	60.750	67.500	74.250	81.000	87.750	94.500	101.250	108.000	108.000
Dimension	Inch		K		29.679	37.179	44.750	52.250	59.750	67.250	74.750	82.250	89.750	97.313	104.813	112.375	119.875	119.875
Dimension	Inch		L		51.000	63.750	76.500	89.250	102.000	114.750	127.500	140.250	153.000	165.750	178.500	191.250	192.000	204.000
Dimension	Inch		M		29.179	36.679	44.250	51.750	59.125	66.625	74.125	81.625	89.000	96.438	103.938	111.375	118.875	118.875
Dimension	Inch		N		1.250	1.625	2.000	2.375	2.688	3.063	3.438	3.813	4.125	4.438	4.813	5.125	5.500	5.500
Dimension	Inch		O		1.321	1.696	2.000	2.375	2.750	3.125	3.500	3.875	4.250	4.563	4.938	5.250	5.625	5.625
Dimension	Inch		Q1		16.000	20.000	24.000	28.000	32.000	36.000	40.000	44.000	48.000	52.000	56.000	60.000	64.000	64.000
Dimension	Inch		Q2		13.679	17.179	20.750	24.250	27.750	31.250	34.750	38.250	41.750	45.313	48.813	52.375	55.875	55.875
Density of Mixed Material	PCF				40													
Desired Tip Speed (250-350)	FPM				350													
Rotor Shaft Diameter Factor					80													
Drive Efficiency					85%													

* Power Calculations empirically derived